

INTRAOPERATIVE LOCALIZATION OF
SENTINEL LYMPH NODES PROVIDED BY
SURGEOSIGHT & SURGEDGUIDE



Providing Ultimate Solution for Surgery

SURGEOSIGHT

Intra-Operative Gamma Camera



SURGEOSIGHT is a portable mini camera developed for pre-surgical lymphoscintigraphy thyroid scan and intra-operative localizing sentinel lymph nodes.

Lymphoscintigraphy and sentinel lymph node biopsy is an area of increasing utility in determining which lymph node basins serve the diseased tissue. The presence or absence of regional lymph node involvement often determines the staging and treatment of many malignant tumors. In some clear words, it can play the role of a "Surgeon's sight" in an operation room.



Specifications:

- number of pixels: 36 × 36
- pixels size: 1.2 mm × 1.2 mm
- PSPMT: H8500
- Field of view: 42 mm × 42 mm
- Spatial Resolution: < 2.6 mm FWHM @
Collimator surface
- Energy Range: 60 – 300 keV
- Weight: 1.2 kg

Applications:

- Pre-operative Lymphoscintigraphy
- Intra-operative sentinel Node Detection
- Scintimammography
- Radio-guided surgery
- Thyroid Scanning
- Small Organs Imaging

SURGEGUIDE

Gamma Probe



SURGEGUIDE is a handheld device for intraoperative use following interstitial injection of a radionuclide, to locate regional lymph nodes by their radioactivity. It is used primarily for sentinel lymph node mapping and parathyroid surgery.

The intraoperative gamma probe technology with **SURGEGUIDE**, is based on the injection in the tumor site of a radiopharmaceutical agent that emits gamma rays while it drains towards the lymphatic system. With the help of the gamma probe, the surgeon expeditiously locates the hot sentinel node(s) or cancerous tissues to be pathologically analyzed as these locations accumulate the radiopharmaceutical agent and have a higher gamma count rate than the background.

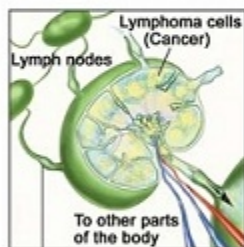
This technique has become widely accepted in surgical oncology.

Specifications:

- Sensitivity: >2 cps/KBq @ face surface
- Side shielding: 99.9 % @ Tc-99m
- Energy Resolution: <11% FWHM @ Tc-99m
- Length: 21 cm
- Face Diameter: 16 mm
- Stainless Steel Body , Tungsten Collimator
- Angular Resolution: <30°
- Local Resolution: <20 mm FWHM at 5 cm dist

Clinical Applications:

- Breast cancer
- Gynecological cancers (cervical, ovarian, uterine, vaginal and vulvar)
- Melanoma and other types of skin tumors
- Head & Neck
- Endocrine cancers (thyroid, parathyroid)
- Urology cancers (prostate, bladder, testicular, kidney and penile)
- Nuclear Medicine (localization of gamma labeled areas)



Lymph nodes

Lymphoma cells (Cancer)

To other parts of the body

Lymph vessel

Lung

Pleura

Diaphragm

Liver

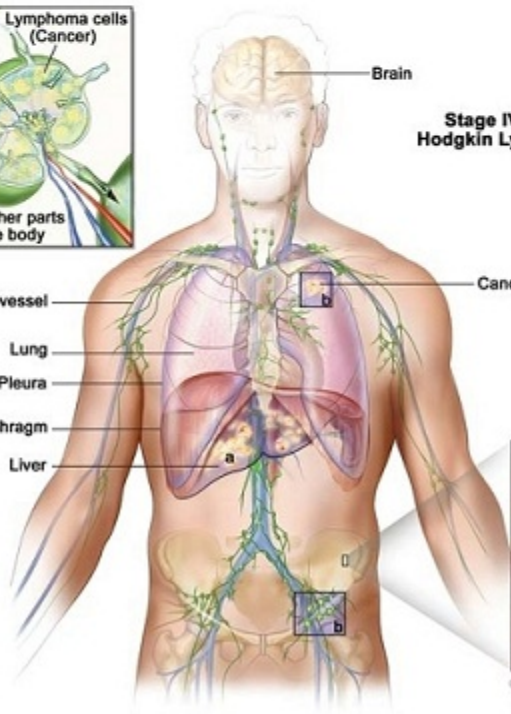
Brain

Stage IV Adult Hodgkin Lymphoma

Cancer

Bone marrow

Cancer



The main benefits of using
SURGEOSIGHT & SURGEGUIDE
on cancer patients' surgeries are:





1. provides vital and real time information about the location and extent of disease and resection margins
2. Helps decrease the surgical time, the patient morbidity and improves the staging accuracy
3. Allows the surgeon to minimize the surgical invasiveness of many diagnostic and therapeutic procedures, whilst maintaining the cancer patient



توسعه صنایع تصویر برداری پرتو نگار پرشیا
طراحی و تولید سیستمهای تصویر برداری

Parto Negar Persia Co.

تهران، بلوار کشاورز، مجتمع بیمارستانی امام خمینی، مرکز رشد لوازم و تجهیزات پزشکی
تلفن: ۰۲۱ - ۶۶۹۰ ۷۵۳۲ فکس: ۰۲۱ - ۶۶۹۰ ۷۵۳۲

Incubation Center for Medical Equipment and Devices, Imam Khomeini Hospital Complex,
Keshavarz Blvd, Tehran, Iran, Po. Box: 14185-615

Tel: +98 21 - 66 90 75 32

Fax: +98 21 - 66 90 75 32

تهران، بلوار کشاورز، نیش خیابان ۱۶ آذر، پلاک ۷۸ مرکز رشد واحدهای فناور دانشگاه الزهراء
تلفن: ۰۲۱ - ۸۸۹۸۲۴۷۹ فکس: ۰۲۱ - ۶۶۹۰ ۷۵۳۲

No. 78, Technology Incubation center of alzahra university, 16 Azar St., Keshavarz Blvd. Tehran, Iran

Tel: +98 21 - 88 98 24 79

Fax: +98 21 - 66 90 75 32

www.pnpmed.com

info@pnpmed.com